

RESACA PALOMA SUBDIVISION NO. 1, LOT 28
 RESACA PALOMA SUBDIVISION NO. 1, LOT 29
 RESACA PALOMA SUBDIVISION NO. 1, LOT 30
 RESACA PALOMA SUBDIVISION NO. 1, LOT 31
 RESACA PALOMA SUBDIVISION NO. 1, LOT 32
 RESACA PALOMA SUBDIVISION NO. 1, LOT 33
 RESACA PALOMA SUBDIVISION NO. 1, LOT 34
 RESACA PALOMA SUBDIVISION NO. 1, LOT 35
 RESACA PALOMA SUBDIVISION NO. 1, LOT 36
 RESACA PALOMA SUBDIVISION NO. 1, LOT 37
 RESACA PALOMA SUBDIVISION NO. 1, LOT 38
 RESACA PALOMA SUBDIVISION NO. 1, LOT 39
 RESACA PALOMA SUBDIVISION NO. 1, LOT 40
 RESACA PALOMA SUBDIVISION NO. 1, LOT 41
 RESACA PALOMA SUBDIVISION NO. 1, LOT 42
 RESACA PALOMA SUBDIVISION NO. 1, LOT 43
 RESACA PALOMA SUBDIVISION NO. 1, LOT 44
 RESACA PALOMA SUBDIVISION NO. 1, LOT 45
 RESACA PALOMA SUBDIVISION NO. 1, LOT 46
 RESACA PALOMA SUBDIVISION NO. 1, LOT 47
 RESACA PALOMA SUBDIVISION NO. 1, LOT 48
 RESACA PALOMA SUBDIVISION NO. 1, LOT 49
 RESACA PALOMA SUBDIVISION NO. 1, LOT 50
 RESACA PALOMA SUBDIVISION NO. 1, LOT 51
 RESACA PALOMA SUBDIVISION NO. 1, LOT 52
 RESACA PALOMA SUBDIVISION NO. 1, LOT 53
 RESACA PALOMA SUBDIVISION NO. 1, LOT 54
 RESACA PALOMA SUBDIVISION NO. 1, LOT 55
 RESACA PALOMA SUBDIVISION NO. 1, LOT 56
 RESACA PALOMA SUBDIVISION NO. 1, LOT 57
 RESACA PALOMA SUBDIVISION NO. 1, LOT 58
 RESACA PALOMA SUBDIVISION NO. 1, LOT 59
 RESACA PALOMA SUBDIVISION NO. 1, LOT 60

DEVELOPER: VERA HOLDINGS & REALTY, LTD.
ADDRESS: 10000 W. BROADWAY, SUITE 1000, DALLAS, TEXAS 75240
PHONE: (214) 232-1199

AGENT: BROWN, LEAL & ASSOCIATES, P.C.
ADDRESS: 10000 W. BROADWAY, SUITE 1000, DALLAS, TEXAS 75240
PHONE: (214) 232-1199

DATE: 10/24/01

APPROVED BY: [Signatures]

GENERAL NOTES:

1. THE SURVEYOR HAS REVIEWED THE RECORDS OF THE COUNTY OF DALLAS AND HAS FOUND THAT THE SUBDIVISION IS IN ACCORDANCE WITH THE REQUIREMENTS OF THE SUBDIVISION ACT.
2. THE SUBDIVISION IS SUBJECT TO THE EASEMENTS AND RESTRICTIONS SHOWN ON THE PLAT.
3. THE SUBDIVISION IS SUBJECT TO THE EASEMENTS AND RESTRICTIONS SHOWN ON THE PLAT.
4. THE SUBDIVISION IS SUBJECT TO THE EASEMENTS AND RESTRICTIONS SHOWN ON THE PLAT.
5. THE SUBDIVISION IS SUBJECT TO THE EASEMENTS AND RESTRICTIONS SHOWN ON THE PLAT.
6. THE SUBDIVISION IS SUBJECT TO THE EASEMENTS AND RESTRICTIONS SHOWN ON THE PLAT.
7. THE SUBDIVISION IS SUBJECT TO THE EASEMENTS AND RESTRICTIONS SHOWN ON THE PLAT.
8. THE SUBDIVISION IS SUBJECT TO THE EASEMENTS AND RESTRICTIONS SHOWN ON THE PLAT.
9. THE SUBDIVISION IS SUBJECT TO THE EASEMENTS AND RESTRICTIONS SHOWN ON THE PLAT.
10. THE SUBDIVISION IS SUBJECT TO THE EASEMENTS AND RESTRICTIONS SHOWN ON THE PLAT.
11. THE SUBDIVISION IS SUBJECT TO THE EASEMENTS AND RESTRICTIONS SHOWN ON THE PLAT.
12. THE SUBDIVISION IS SUBJECT TO THE EASEMENTS AND RESTRICTIONS SHOWN ON THE PLAT.
13. THE SUBDIVISION IS SUBJECT TO THE EASEMENTS AND RESTRICTIONS SHOWN ON THE PLAT.
14. THE SUBDIVISION IS SUBJECT TO THE EASEMENTS AND RESTRICTIONS SHOWN ON THE PLAT.
15. THE SUBDIVISION IS SUBJECT TO THE EASEMENTS AND RESTRICTIONS SHOWN ON THE PLAT.

RESACA PALOMA SUBDIVISION NO. 1, LOT 28
 1.670 GROSS AC.
 1.497 NET AC.

RESACA PALOMA SUBDIVISION NO. 1, LOT 29
 1.492 GROSS AC.
 1.341 NET AC.

RESACA PALOMA SUBDIVISION NO. 1, LOT 30
 1.444 GROSS AC.
 1.300 NET AC.

RESACA PALOMA SUBDIVISION NO. 1, LOT 31
 2.082 GROSS AC.
 1.948 NET AC.

RESACA PALOMA SUBDIVISION NO. 1, LOT 32
 2.018 GROSS AC.
 1.890 NET AC.

RESACA PALOMA SUBDIVISION NO. 1, LOT 33
 2.018 GROSS AC.
 1.890 NET AC.

RESACA PALOMA SUBDIVISION NO. 1, LOT 34
 2.018 GROSS AC.
 1.890 NET AC.

RESACA PALOMA SUBDIVISION NO. 1, LOT 35
 2.018 GROSS AC.
 1.890 NET AC.

RESACA PALOMA SUBDIVISION NO. 1, LOT 36
 2.018 GROSS AC.
 1.890 NET AC.

RESACA PALOMA SUBDIVISION NO. 1, LOT 37
 2.018 GROSS AC.
 1.890 NET AC.

RESACA PALOMA SUBDIVISION NO. 1, LOT 38
 2.018 GROSS AC.
 1.890 NET AC.

RESACA PALOMA SUBDIVISION NO. 1, LOT 39
 2.018 GROSS AC.
 1.890 NET AC.

RESACA PALOMA SUBDIVISION NO. 1, LOT 40
 2.018 GROSS AC.
 1.890 NET AC.

RESACA PALOMA SUBDIVISION NO. 1, LOT 41
 2.018 GROSS AC.
 1.890 NET AC.

RESACA PALOMA SUBDIVISION NO. 1, LOT 42
 2.018 GROSS AC.
 1.890 NET AC.

RESACA PALOMA SUBDIVISION NO. 1, LOT 43
 2.018 GROSS AC.
 1.890 NET AC.

RESACA PALOMA SUBDIVISION NO. 1, LOT 44
 2.018 GROSS AC.
 1.890 NET AC.

RESACA PALOMA SUBDIVISION NO. 1, LOT 45
 2.018 GROSS AC.
 1.890 NET AC.

RESACA PALOMA SUBDIVISION NO. 1, LOT 46
 2.018 GROSS AC.
 1.890 NET AC.

RESACA PALOMA SUBDIVISION NO. 1, LOT 47
 2.018 GROSS AC.
 1.890 NET AC.

RESACA PALOMA SUBDIVISION NO. 1, LOT 48
 2.018 GROSS AC.
 1.890 NET AC.

RESACA PALOMA SUBDIVISION NO. 1, LOT 49
 2.018 GROSS AC.
 1.890 NET AC.

RESACA PALOMA SUBDIVISION NO. 1, LOT 50
 2.018 GROSS AC.
 1.890 NET AC.

RESACA PALOMA SUBDIVISION NO. 1, LOT 51
 2.018 GROSS AC.
 1.890 NET AC.

RESACA PALOMA SUBDIVISION NO. 1, LOT 52
 2.018 GROSS AC.
 1.890 NET AC.

RESACA PALOMA SUBDIVISION NO. 1, LOT 53
 2.018 GROSS AC.
 1.890 NET AC.

RESACA PALOMA SUBDIVISION NO. 1, LOT 54
 2.018 GROSS AC.
 1.890 NET AC.

RESACA PALOMA SUBDIVISION NO. 1, LOT 55
 2.018 GROSS AC.
 1.890 NET AC.

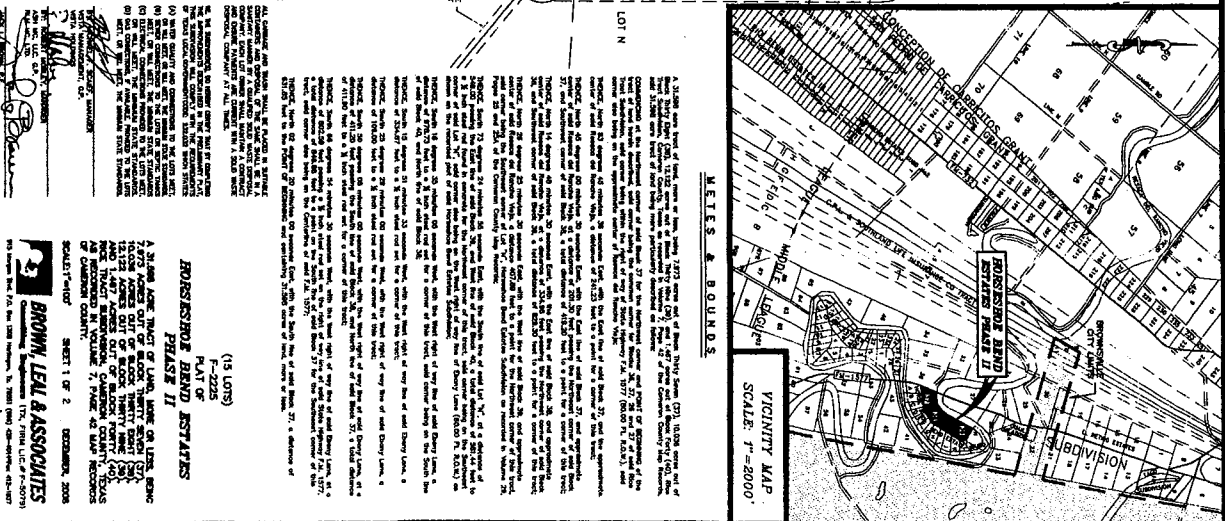
RESACA PALOMA SUBDIVISION NO. 1, LOT 56
 2.018 GROSS AC.
 1.890 NET AC.

RESACA PALOMA SUBDIVISION NO. 1, LOT 57
 2.018 GROSS AC.
 1.890 NET AC.

RESACA PALOMA SUBDIVISION NO. 1, LOT 58
 2.018 GROSS AC.
 1.890 NET AC.

RESACA PALOMA SUBDIVISION NO. 1, LOT 59
 2.018 GROSS AC.
 1.890 NET AC.

RESACA PALOMA SUBDIVISION NO. 1, LOT 60
 2.018 GROSS AC.
 1.890 NET AC.



BROWN, LEAL & ASSOCIATES, P.C.
 10000 W. BROADWAY, SUITE 1000, DALLAS, TEXAS 75240
 (214) 232-1199

RESACA PALOMA SUBDIVISION NO. 1, LOT 28
 1.670 GROSS AC.
 1.497 NET AC.

RESACA PALOMA SUBDIVISION NO. 1, LOT 29
 1.492 GROSS AC.
 1.341 NET AC.

RESACA PALOMA SUBDIVISION NO. 1, LOT 30
 1.444 GROSS AC.
 1.300 NET AC.

RESACA PALOMA SUBDIVISION NO. 1, LOT 31
 2.082 GROSS AC.
 1.948 NET AC.

RESACA PALOMA SUBDIVISION NO. 1, LOT 32
 2.018 GROSS AC.
 1.890 NET AC.

RESACA PALOMA SUBDIVISION NO. 1, LOT 33
 2.018 GROSS AC.
 1.890 NET AC.

RESACA PALOMA SUBDIVISION NO. 1, LOT 34
 2.018 GROSS AC.
 1.890 NET AC.

RESACA PALOMA SUBDIVISION NO. 1, LOT 35
 2.018 GROSS AC.
 1.890 NET AC.

RESACA PALOMA SUBDIVISION NO. 1, LOT 36
 2.018 GROSS AC.
 1.890 NET AC.

RESACA PALOMA SUBDIVISION NO. 1, LOT 37
 2.018 GROSS AC.
 1.890 NET AC.

RESACA PALOMA SUBDIVISION NO. 1, LOT 38
 2.018 GROSS AC.
 1.890 NET AC.

RESACA PALOMA SUBDIVISION NO. 1, LOT 39
 2.018 GROSS AC.
 1.890 NET AC.

RESACA PALOMA SUBDIVISION NO. 1, LOT 40
 2.018 GROSS AC.
 1.890 NET AC.

RESACA PALOMA SUBDIVISION NO. 1, LOT 41
 2.018 GROSS AC.
 1.890 NET AC.

RESACA PALOMA SUBDIVISION NO. 1, LOT 42
 2.018 GROSS AC.
 1.890 NET AC.

RESACA PALOMA SUBDIVISION NO. 1, LOT 43
 2.018 GROSS AC.
 1.890 NET AC.

RESACA PALOMA SUBDIVISION NO. 1, LOT 44
 2.018 GROSS AC.
 1.890 NET AC.

RESACA PALOMA SUBDIVISION NO. 1, LOT 45
 2.018 GROSS AC.
 1.890 NET AC.

RESACA PALOMA SUBDIVISION NO. 1, LOT 46
 2.018 GROSS AC.
 1.890 NET AC.

RESACA PALOMA SUBDIVISION NO. 1, LOT 47
 2.018 GROSS AC.
 1.890 NET AC.

RESACA PALOMA SUBDIVISION NO. 1, LOT 48
 2.018 GROSS AC.
 1.890 NET AC.

RESACA PALOMA SUBDIVISION NO. 1, LOT 49
 2.018 GROSS AC.
 1.890 NET AC.

RESACA PALOMA SUBDIVISION NO. 1, LOT 50
 2.018 GROSS AC.
 1.890 NET AC.

RESACA PALOMA SUBDIVISION NO. 1, LOT 51
 2.018 GROSS AC.
 1.890 NET AC.

RESACA PALOMA SUBDIVISION NO. 1, LOT 52
 2.018 GROSS AC.
 1.890 NET AC.

RESACA PALOMA SUBDIVISION NO. 1, LOT 53
 2.018 GROSS AC.
 1.890 NET AC.

RESACA PALOMA SUBDIVISION NO. 1, LOT 54
 2.018 GROSS AC.
 1.890 NET AC.

RESACA PALOMA SUBDIVISION NO. 1, LOT 55
 2.018 GROSS AC.
 1.890 NET AC.

RESACA PALOMA SUBDIVISION NO. 1, LOT 56
 2.018 GROSS AC.
 1.890 NET AC.

RESACA PALOMA SUBDIVISION NO. 1, LOT 57
 2.018 GROSS AC.
 1.890 NET AC.

RESACA PALOMA SUBDIVISION NO. 1, LOT 58
 2.018 GROSS AC.
 1.890 NET AC.

RESACA PALOMA SUBDIVISION NO. 1, LOT 59
 2.018 GROSS AC.
 1.890 NET AC.

RESACA PALOMA SUBDIVISION NO. 1, LOT 60
 2.018 GROSS AC.
 1.890 NET AC.